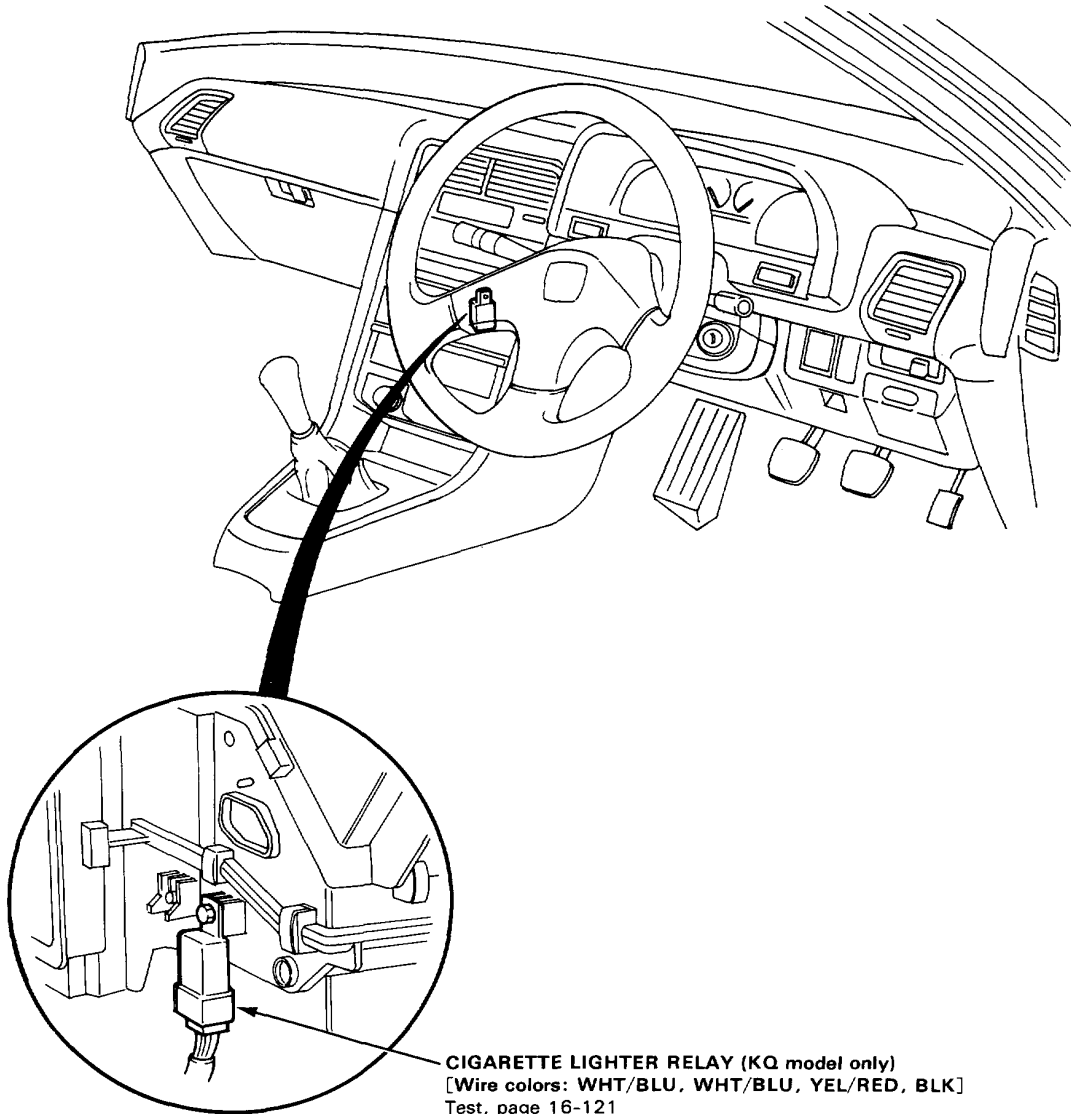


Cigarette Lighter

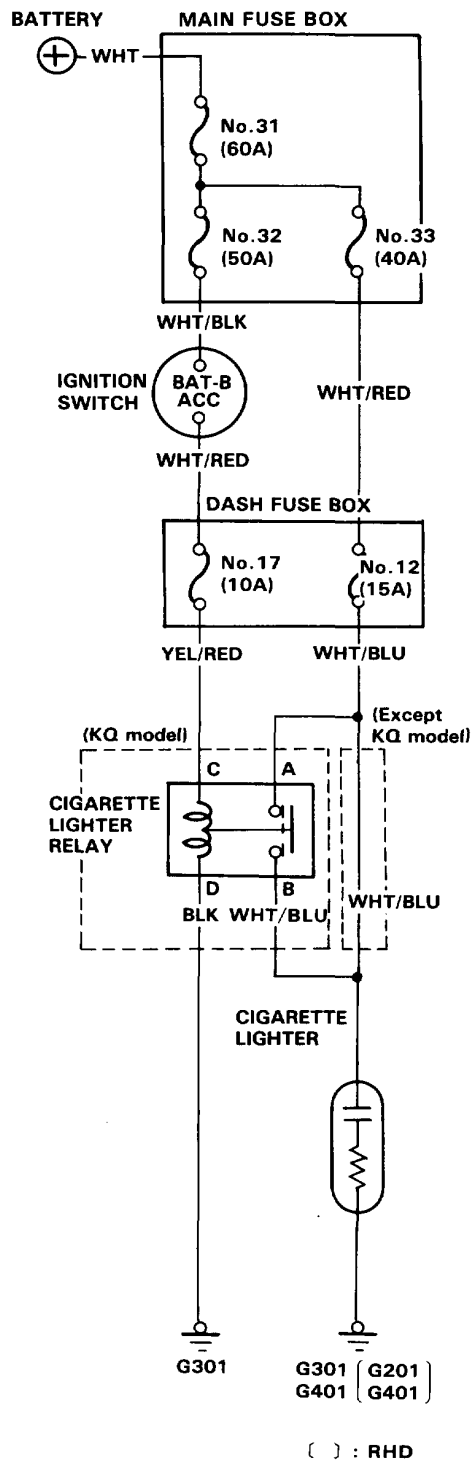
Component Location Index

- CIGARETTE LIGHTER
Replacement, page 16-122





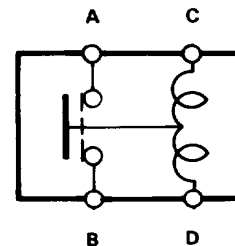
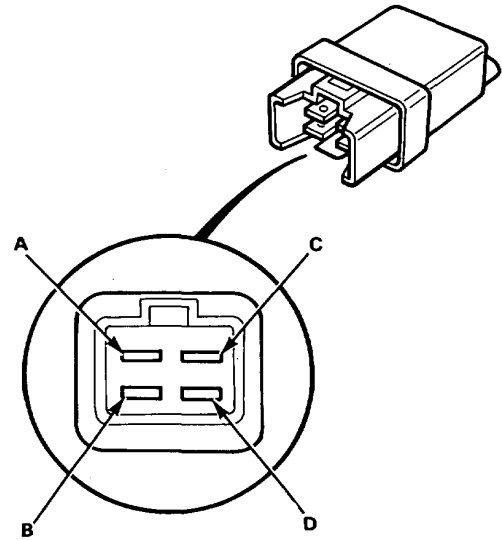
Circuit Diagram



Cigarette Lighter Relay Test

There should be continuity between the A and B terminals when the battery is connected to the C and D terminals.

There should be no continuity when the battery is disconnected.

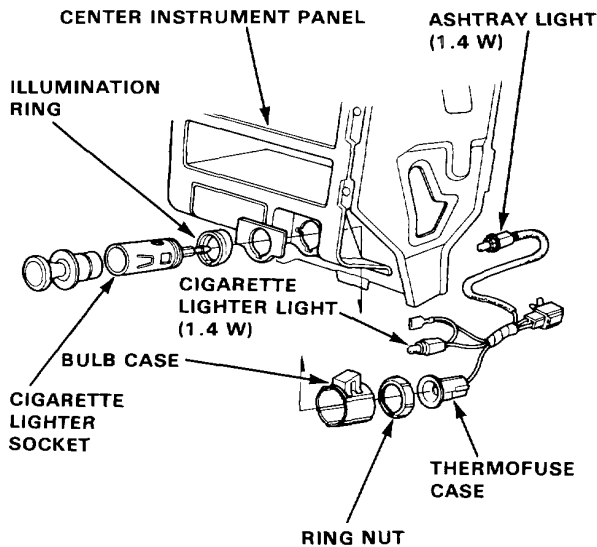


Cigarette Lighter

Replacement

Si model:

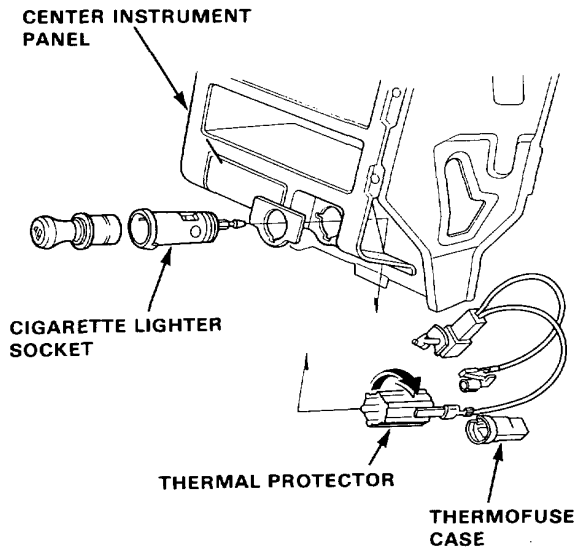
1. Remove the front console.
2. Remove the 6 screws and the center instrument panel with the stereo radio/cassette player, then disconnect the 16-P connector, the mast antenna lead and the 4-P connector.
3. Disconnect the thermofuse case from the socket end.
4. Remove the ring nut and separate the cigarette lighter socket from the thermal protector.



5. When installing the cigarette lighter, align each lug on the illumination ring and cigarette lighter socket with the groove in the hole, then position the bulb case on the thermal protector between the stoppers of the center panel.
6. Make sure that the ground wire, bulb socket and thermofuse case are seated to the cigarette lighter assembly.

Std model:

1. Remove the front console.
2. Remove the 6 screws and the center instrument panel with the stereo radio/cassette player, then disconnect the 16-P connector, the mast antenna lead and the 2-P connector from the cigarette lighter.
3. Disconnect the thermofuse case from the socket end.
4. Remove the thermal protector and separate the cigarette lighter socket.



5. When installing the cigarette lighter, align the lug on the cigarette lighter socket with the groove in the hole.
6. Make sure that the ground wire, thermofuse case are seated to the cigarette lighter assembly.