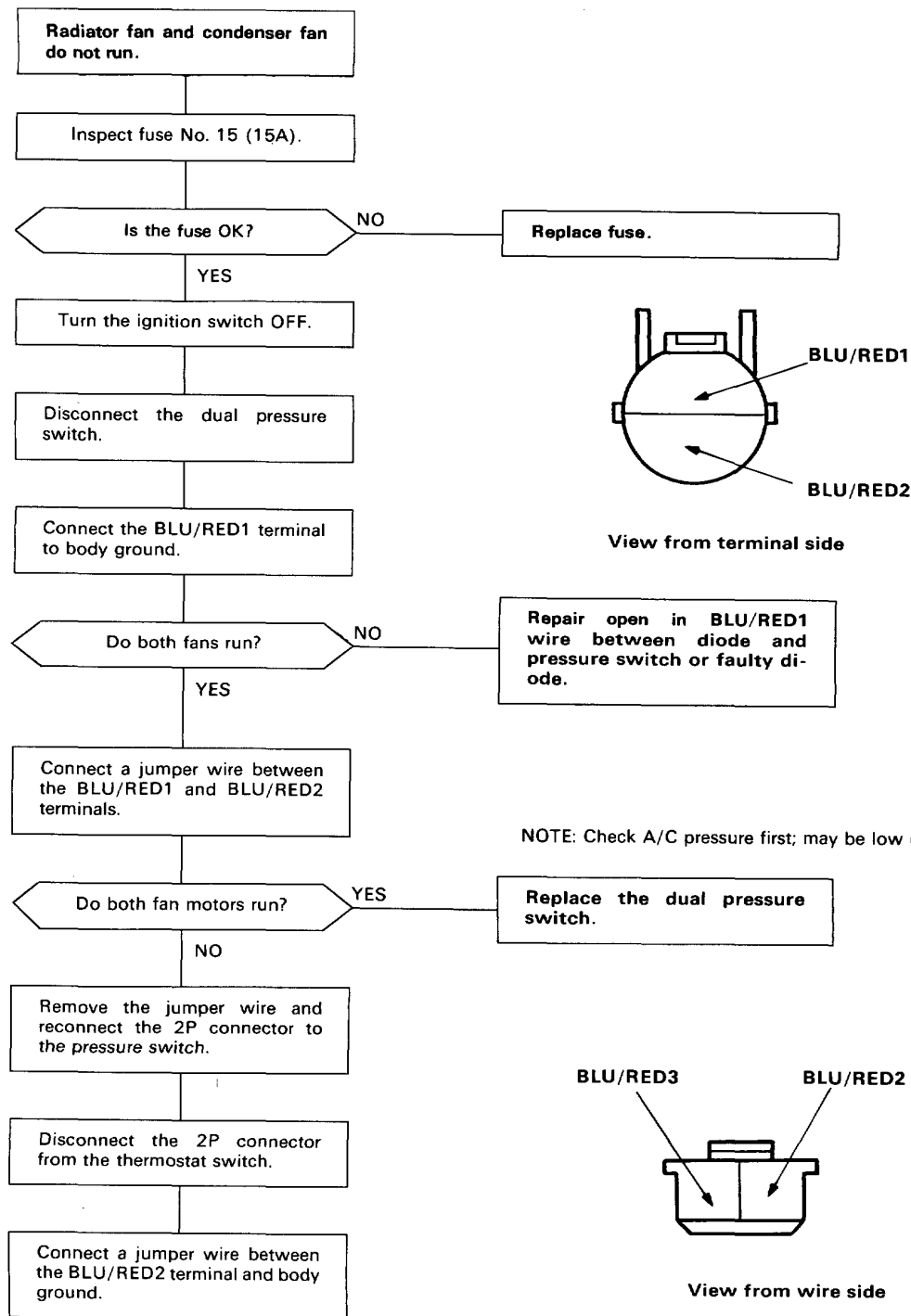


Troubleshooting

Flow Chart : Both Fans





(From page 15-34)

Turn the ignition switch ON.

Do both fan motors run?

NO

Repair open in **BLU/RED2** wire between the pressure switch and thermostat switch.

YES

Connect a jumper wire between the **BLU/RED2** and **BLU/RED3** terminals of the thermostat switch connector.

Do both fan motors run?

YES

Replace the thermostat switch.

NO

Reconnect the 2P connector to the thermostat switch. Disconnect the 5P connector from the A/C switch.

Connect the **BLU/RED3** terminal to the body ground.

Do both fan motors run?

NO

Repair open in **BLU/RED3** wire between the thermostat switch and A/C switch.

YES

Connect the **BLU/RED3** and **GRN** terminals with a jumper wire.

Do both fan motors run?

YES

Replace the A/C switch.

NO

Check the heater fan switch (page 15-23).

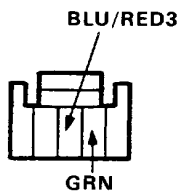
Is the heater fan switch OK?

NO

Replace the heater fan switch.

YES

(To page 15-36)



View from wire side

(cont'd)

Troubleshooting

Flow Chart : Both Fans (cont'd)

(From page 15-35)

Reconnect the 5P connector to the A/C switch and disconnect the 6P connector from the heater fan switch.

Connect a jumper wire between the GRN terminal and body ground.

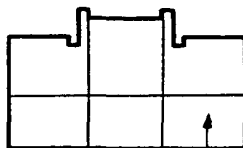
Do both fans run?

NO

Repair open in GRN wire between the heater fan switch and A/C switch.

YES

Repair open in BLK wire between the heater fan switch and ground or poor ground (G201).



GRN

View from wire side