

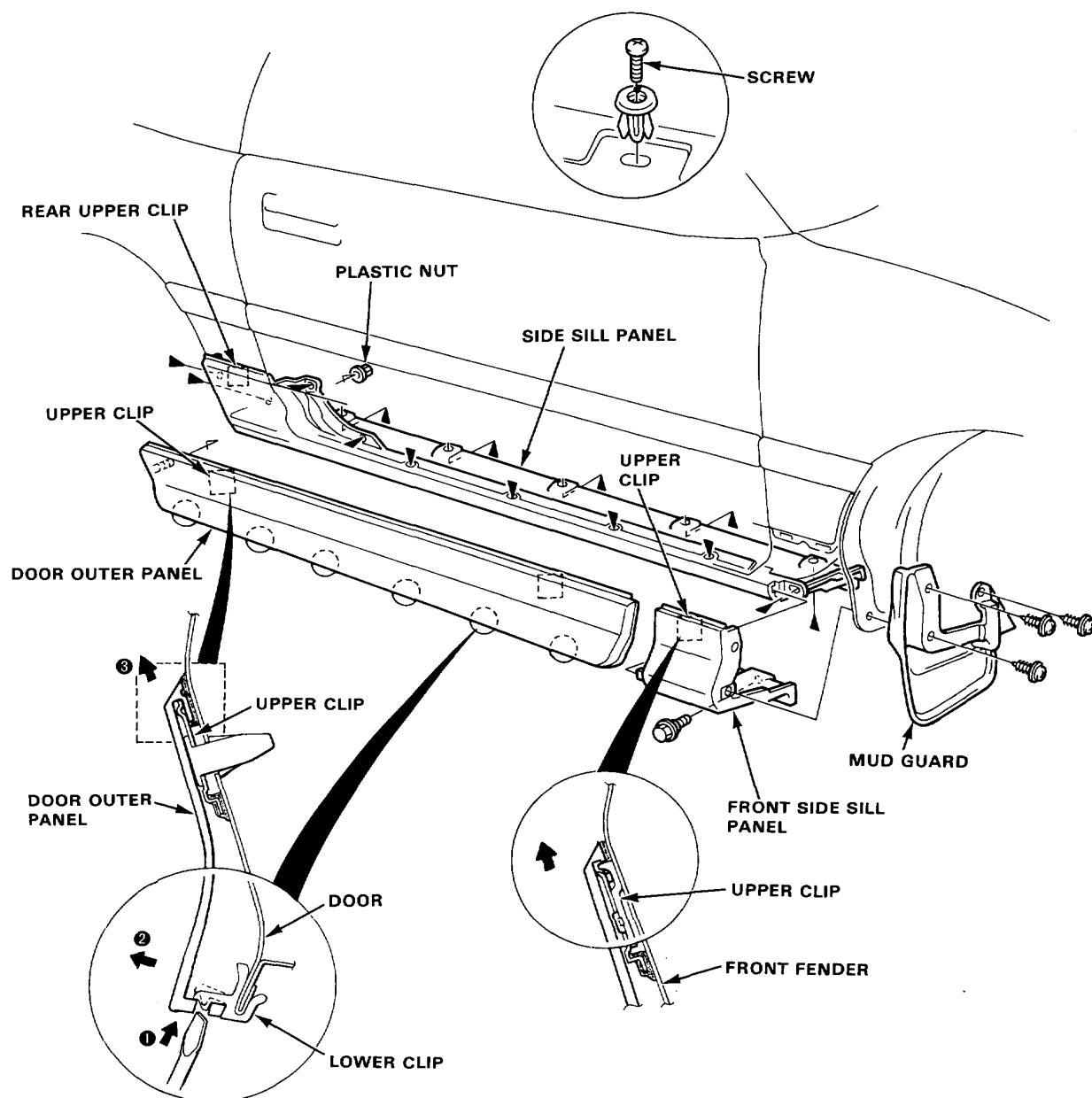


# Side Panels

## Replacement

1. Remove the plastic nut and 6 lower clips with a long flat-tip screwdriver.
  2. Lift the door outer panel straight up off the 2 upper clips, then remove the door outer panel.
  3. Remove the bolt, screw and 1 upper clip, then remove the front side sill panel.
  4. Remove the 14 screws and 1 rear upper clip, then remove the side sill panel.
- NOTE: Take care not to damage the side sill and door.

▲ : Screw location



5. Install the side panel in the reverse order of removal.